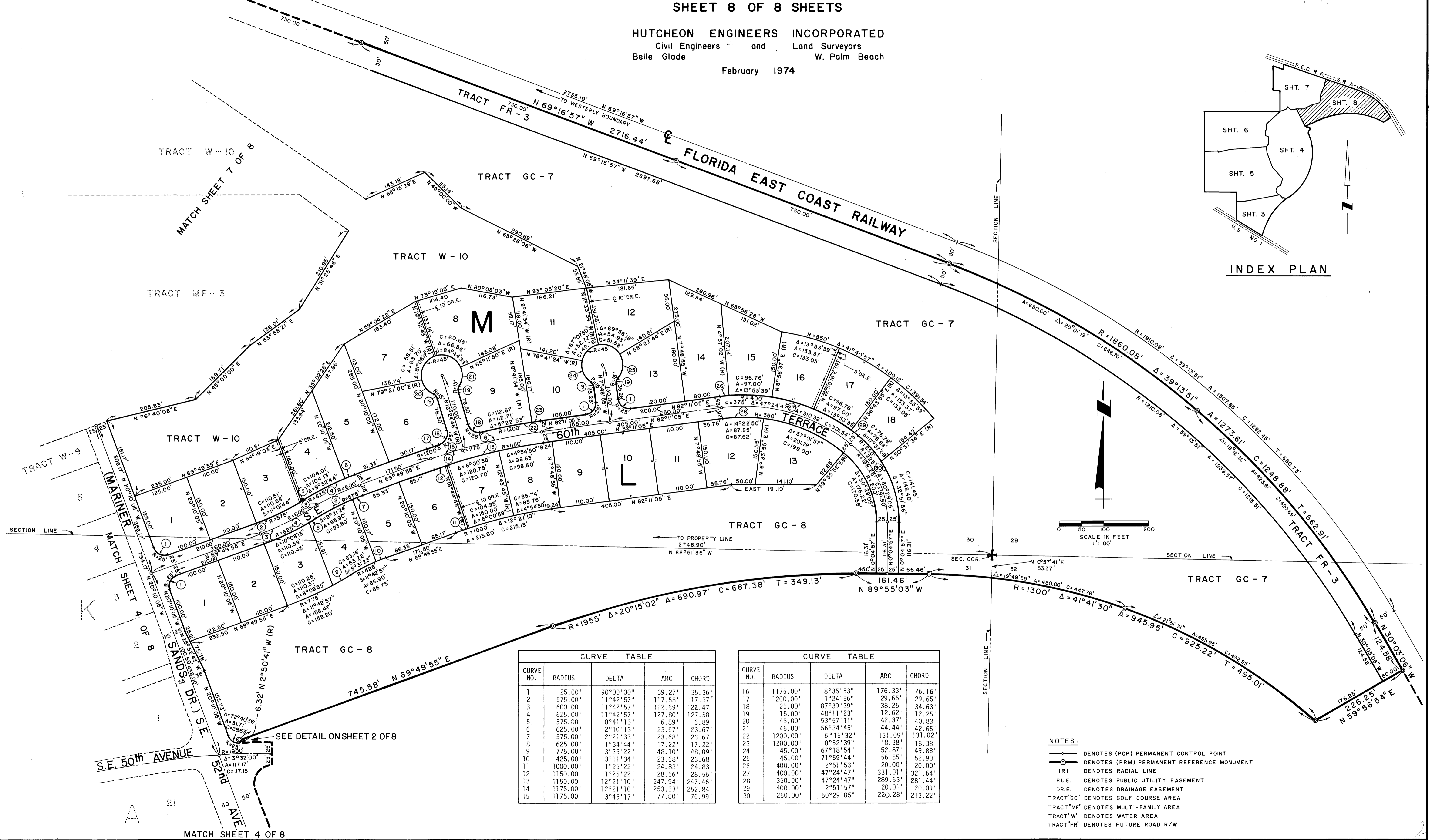
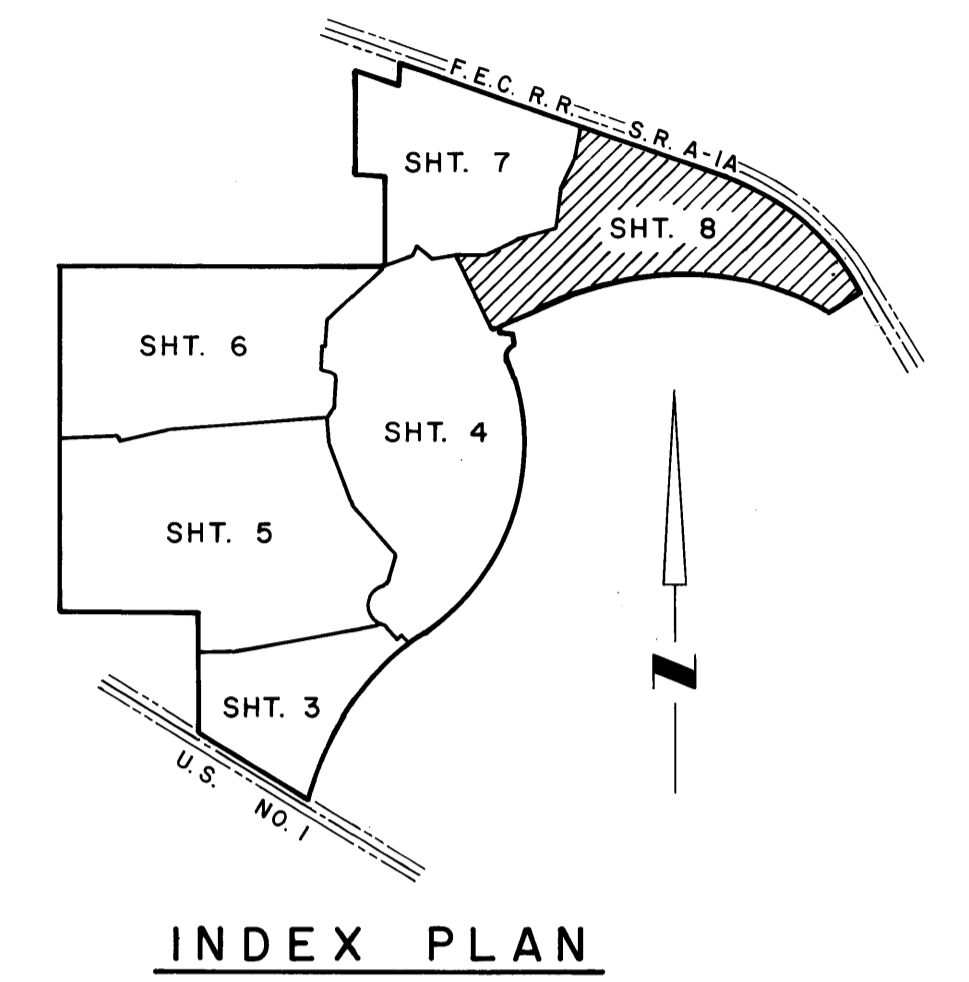


# MARINER SANDS PLAT NO. 1

SHEET 8 OF 8 SHEETS

HUTCHEON ENGINEERS INCORPORATED  
Civil Engineers and Land Surveyors  
Belle Glade and W. Palm Beach

February 1974



CURVE TABLE

CURVE NO.	RADIUS	DELTA	ARC	CHORD
1	25.00'	90°00'00"	39.27'	35.36'
2	575.00'	11°42'57"	117.58'	117.37'
3	600.00'	11°42'57"	122.69'	122.47'
4	625.00'	11°42'57"	127.80'	127.58'
5	575.00'	0°41'13"	6.89'	6.89'
6	625.00'	2°10'13"	23.67'	23.67'
7	575.00'	2°21'33"	23.68'	23.67'
8	625.00'	1°34'44"	17.22'	17.22'
9	775.00'	3°33'22"	48.10'	48.09'
10	425.00'	3°11'34"	23.68'	23.68'
11	1000.00'	1°25'22"	24.83'	24.83'
12	1150.00'	1°25'22"	28.56'	28.56'
13	1150.00'	12°21'10"	247.94'	247.46'
14	1175.00'	12°21'10"	253.33'	252.84'
15	1175.00'	3°45'17"	77.00'	76.99'

CURVE TABLE

CURVE NO.	RADIUS	DELTA	ARC	CHORD
16	1175.00'	8°35'53"	176.33'	176.16'
17	1200.00'	1°24'56"	29.65'	29.65'
18	25.00'	87°39'39"	38.25'	34.63'
19	15.00'	48°11'23"	12.62'	12.25'
20	45.00'	53°57'11"	42.37'	40.83'
21	45.00'	56°34'45"	44.44'	42.65'
22	1200.00'	6°15'32"	131.09'	131.02'
23	1200.00'	0°52'39"	18.38'	18.38'
24	45.00'	67°18'54"	52.57'	49.88'
25	45.00'	71°59'44"	56.55'	52.90'
26	400.00'	2°51'53"	20.00'	20.00'
27	400.00'	47°24'47"	331.01'	321.64'
28	350.00'	47°24'47"	289.63'	281.44'
29	400.00'	2°51'57"	20.01'	20.01'
30	250.00'	50°29'05"	220.28'	213.22'

- NOTES:
- DENOTES (PCP) PERMANENT CONTROL POINT
  - DENOTES (PRM) PERMANENT REFERENCE MONUMENT
  - (R) DENOTES RADIAL LINE
  - P.U.E. DENOTES PUBLIC UTILITY EASEMENT
  - D.R.E. DENOTES DRAINAGE EASEMENT
  - TRACT "GC" DENOTES GOLF COURSE AREA
  - TRACT "MF" DENOTES MULTI-FAMILY AREA
  - TRACT "W" DENOTES WATER AREA
  - TRACT "FR" DENOTES FUTURE ROAD R/W